



GreyFox



FLOAT



GreyFox

At GreyFox we observe, listen and answer to the basic needs of a complex society with a focus on human movement.

GreyFox is a research and design led initiative, whose ambition is to develop, produce and distribute high quality, humanised furniture solutions for the 21st Century.

We develop solutions to focus on human movement, user health and wellbeing.

A Concept of Urbanism

As we move toward higher density living and working in urban environments, we lose touch with our naturalistic roots and biophilic requirements. We shut off from people as our bodies and minds acclimatise to the built environment.

As we move further from the fields, our focus at GreyFox is to reconnect you, through the critical heritages of being human, in the 21st century.

In re-imagining how we work, learn and connect our collections provoke joy and surprise!



FLOAT

for GreyFox, by Perch

We specialise in research-led design for applied human movement. We conduct quantitative and qualitative research, to find out how people communicate, congregate, work and learn. Our passion is developing new solutions in emergent fields, to improve the quality of life for people.

We consider ergonomics, psychology and aesthetics as equally important and we are hugely excited to be developing new and elegant solutions for GreyFox.



The objective with FLOAT is to improve informal interactions between people

With Float we have created an impossibly light, novel and fun solution which gives access to human movement and provides the DNA for a wide range of accompanying products creating the Float Collection

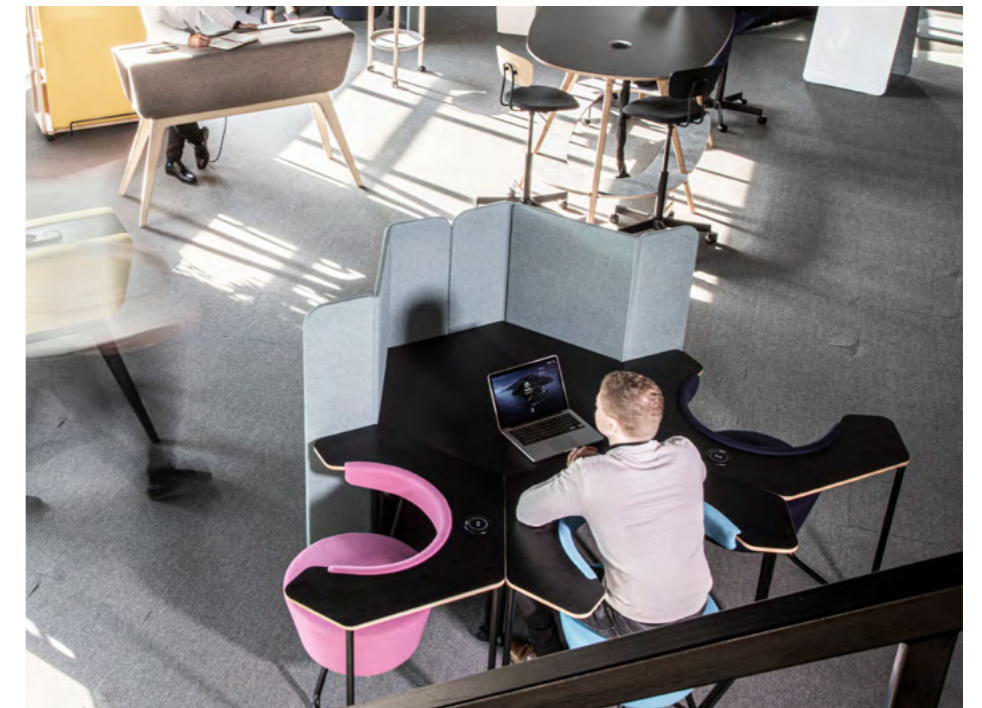


When we start with a focus, purely on the Human; their psychological, physiological and biophilic needs, we find that the concept, for something new and meaningful, designs itself.

www.perch.ie

Simple, Modular, Elegant

FLOAT provides collaborative workspaces simply - it is lightweight, upholstered and fitted with castors for mobility.



The Hexagon

the basic building block of Float supports endless combinations and layouts.

Whatever your needs, the agility and flexibility of FLOAT encourages more naturalistic and meaningful communication between people.



Add and LINK

Ideal in public spaces with limitless combinations.

Public Spaces



Work



A furniture collection

that is as flexible as you are. There is no front or back to FLOAT, so you can turn in any direction; toward a colleague, or away toward focused work.



Learn



Connect

Untethered

Remove battery anxiety from Social / Collaborative spaces.
FLOAT furniture elements can be proved with easily swappable, high capacity rechargeable batteries from AirCharge®
- inductive charging.



The Float Collection

includes a dividing screen, stool and table element, which have been designed to work together, seamlessly. The generous, comfortable arm-pad of the Float chair can be specified in a contrasting finish to its seat.



Social space or private space

Improving the quality of modern working life, enhancing the learning environment and facilitating collaboration.



A fresh take

The GreyFox collection aims to improve the overall experience and interaction of workers and learners throughout the work day.



FLOAT X



Our hard wearing surface option

and our soft approach to human needs make this the perfect solution for intensive use in learning environments.



Many possibilities

We take great pride in seeing FLOAT being used in a multitude of environments, from museums and college campuses, to retail and office environments.



The more constant and seamless

our virtual connections become, the more important physical place becomes in bringing us together in meaningful ways.





FLOAT Armchair description

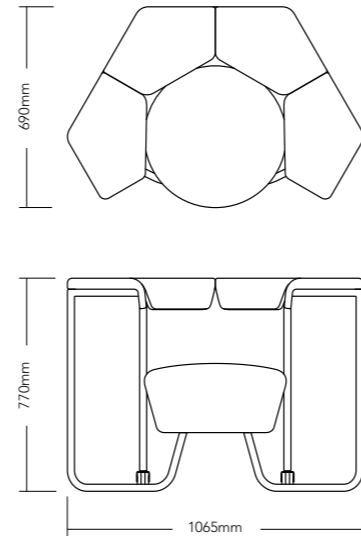
Modular soft seating system
 Moulded beech laminate back and arm support
 Dome topped PU foam swivel seat mounted on canting frame
 Hand crafted upholstery with combustion modified high resilient (cmhr) foam.
 High tensile steel tube frame, epoxy powder coated finish in black or white
 Optional frame finish available on request.
 Upholstered in a wide selection of contract grade fabrics
 Please refer to pricing guide for further finish details

Dimensions

LxWxH - 1065 x 690 x 770mm

Castors

Twin wheel 50mm high load swivel castor

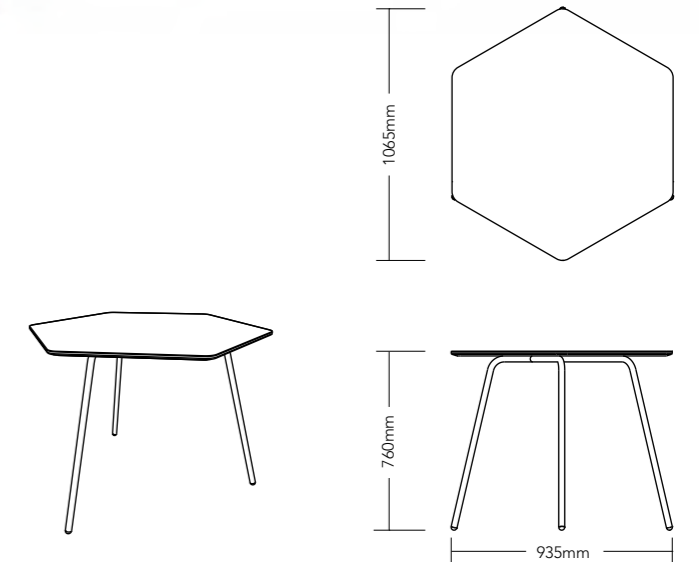


FLOAT Table description

Hexagonal modular table
 Furniture linoleum table top in a choice of colours
 25mm Birch Plywood substrate
 High tensile steel tube frame, epoxy powder coated finish in black or white
 Optional frame finish available on request
 Please refer to pricing guide for further finish details

Dimensions

LxWxH - 1065 x 935 x 760mm

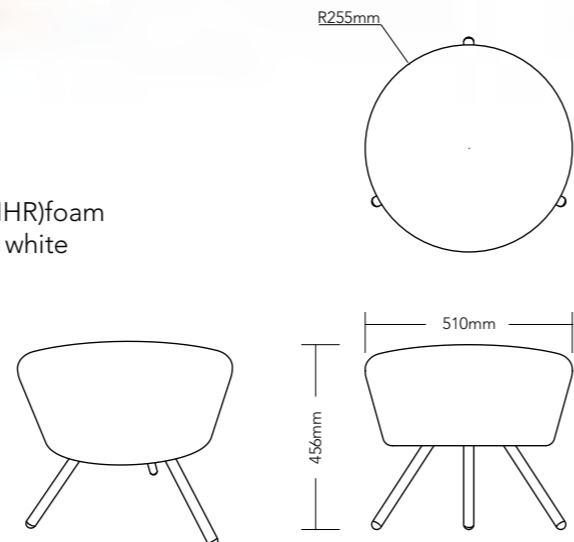


FLOAT Stool description

Modular soft seating system
 Dome topped PU foam swivel seat on 3 leg frame
 Hand crafted upholstery with combustion modified high resilient (CMHR) foam
 High tensile steel tube frame, epoxy powder coated finish in black or white
 Optional frame finish available on request.
 Upholstered in a wide selection of contract grade fabrics
 Please refer to pricing guide for further finish details

Dimensions

LxWxH- 510 x 510 x 456mm



FLOAT X description

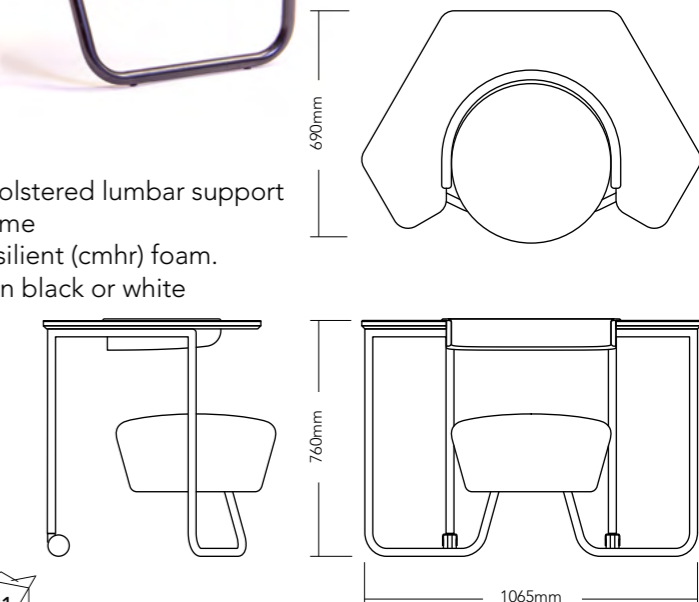
Modular soft seating system
 Laminated Plywood worktop with moulded plywood & upholstered lumbar support
 Dome topped PU foam swivel seat mounted on canting frame
 Hand crafted upholstery with combustion modified high resilient (cmhr) foam.
 High tensile steel tube frame, epoxy powder coated finish in black or white
 Optional frame finish available on request.
 Upholstered in a wide selection of contract grade fabrics
 Please refer to pricing guide for further finish details

Dimensions

LxWxH- 1065 x 690 x 760mm

Castors

Twin wheel 50mm high load swivel castor

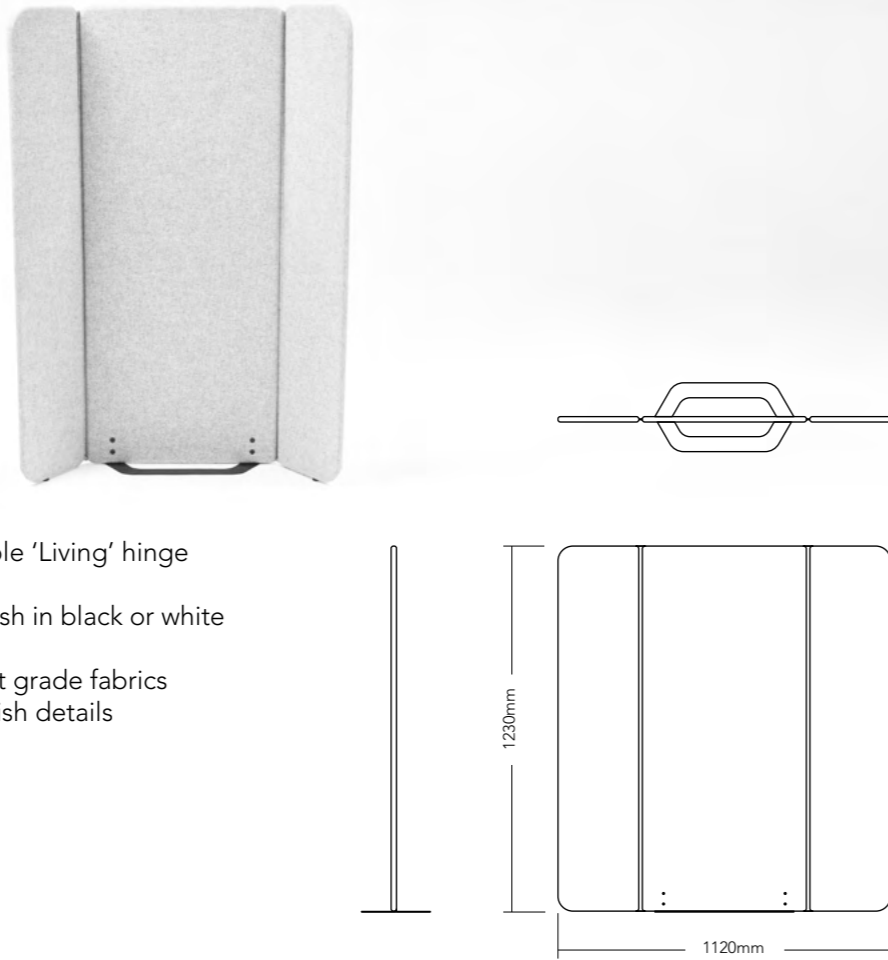


FLOAT Screen description

Modular privacy screen with two way flexible 'Living' hinge
 Upholstered lightweight frame
 Steel frame with epoxy powder coated finish in black or white
 Optional frame finish available on request.
 Upholstered in a wide selection of contract grade fabrics
 Please refer to pricing guide for further finish details

Dimensions

LxWxH- 1120 x 230 x 1230mm



At GreyFox, we are delighted to partner with Aircharge to bring a truly wireless charging experience to our full product range.

SUPERIOR ENGINEERING

Aircharge wireless charging technology is manufactured using state-of-the-art, superior grade components for contract use, providing safe and convenient wireless power to public venues 24/7.

2 YEAR WARRANTY

Aircharge is committed to quality and provides a two-year warranty on all its wireless chargers.

FAST UNIVERSAL CHARGING

Capable of delivering up to 15W, ensuring wireless charging at the fastest possible rate. Aircharge is compatible with over 130 smartphones from 40 different manufacturers.

TECHNOLOGY MEETS DESIGN

Aircharge is available in a range of bespoke textures and materials providing a seamless surface or subsurface integration into any desk or tabletop for a premium finish and enhanced experience.

UNIQUE SOLUTIONS

Aircharge is a pioneer in bringing unique wireless charging solutions to meet all requirements related to public space deployment.

HIGHEST-LEVEL CERTIFICATIONS

All Aircharge solutions have passed rigorous, independent laboratory tests for safety, interoperability and energy efficiency to provide the best and most reliable wireless charging experience. Aircharge is also the world's only railway compliant wireless charging solution.



Better workplaces in a better world

At GreyFox the principles of longevity, purpose and sustainability guide everything we do; we've built our processes around them. Our furniture is designed to promote the health of its users, whilst sustaining the health of our planet.

Our clients buy less because our products do more. They stand the test of time and the demands of their users.

Our furniture is designed to be easily maintained, renewed and serviced. We keep our products out of landfill, we take them back at end of life and ensure they are repurposed. We manufacture our products locally. We stand over and ensure the sustainability of all stages of our product development.

Our conscience guides the selection of our materials and suppliers. We want to produce furniture made of sustainably forested woods, natural fabrics and water based finishes.

At GreyFox, our commitment to sustainability is resolute. Our environmental conscience guides what we do and will adapt and evolve with us. We design and manufacture for better workplaces in a better world.



With love, care and attention,
in Ireland



GreyFox

A Concept of Urbanism

Casement House,
Clonlara Road,
Baldonnell Business Park,
Dublin 22,
D22Y5H2,
Ireland